

# CHASING THE DRAGON

Eyes of the Dragon

GB 20

Mouth of the Dragon

DU 14

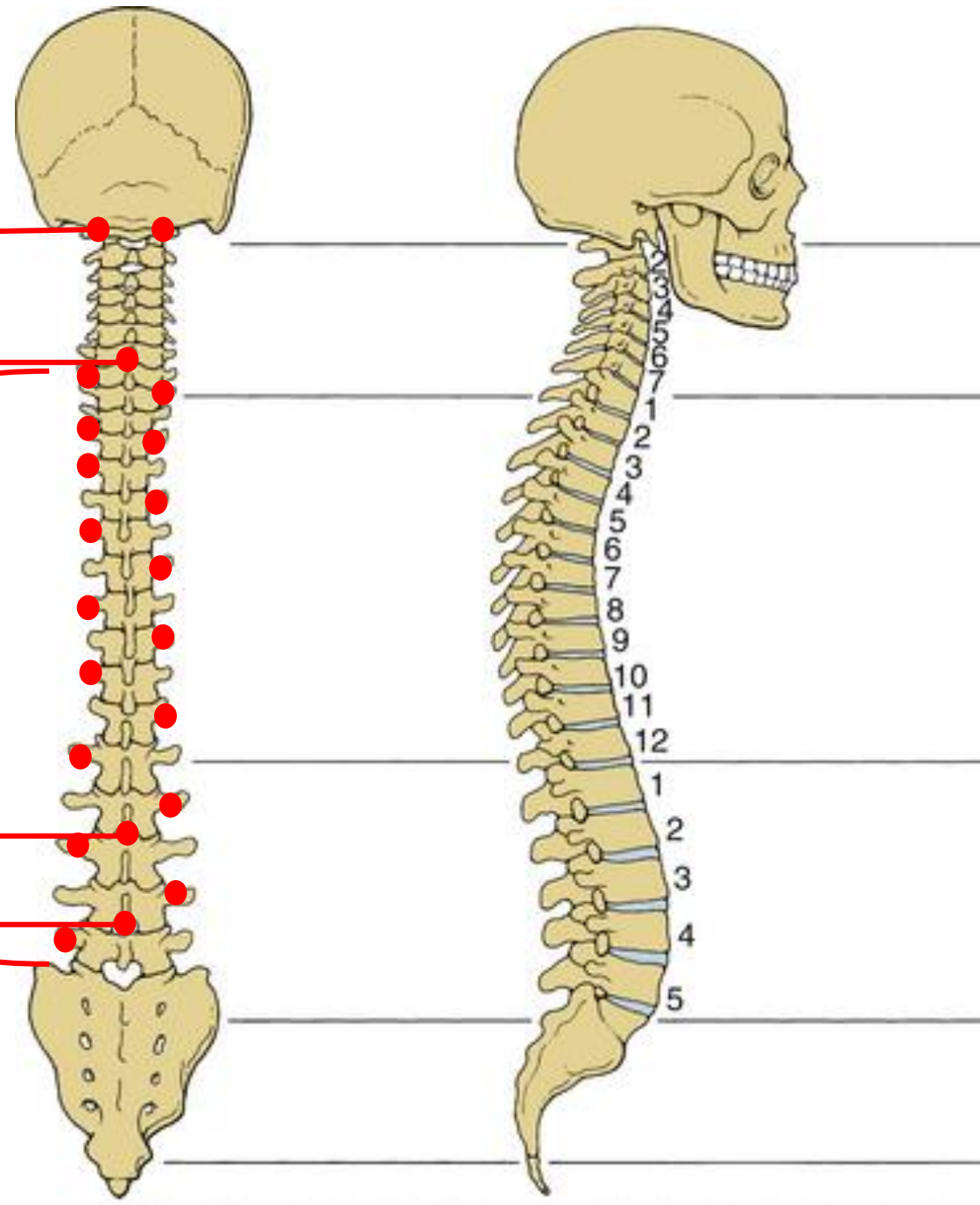
Body of the Dragon Points:  
Thoracic & Lumbar  
Spinous Processes T1  
through LU5

Tail of the Dragon

DU 4

DU 3

**Note 1:** Needle to the bone, over spinous processes & towards spine



Cervical

Thoracic

Lumbar

**Note 2:** For women, start with GB Right, For men, start GB Left